

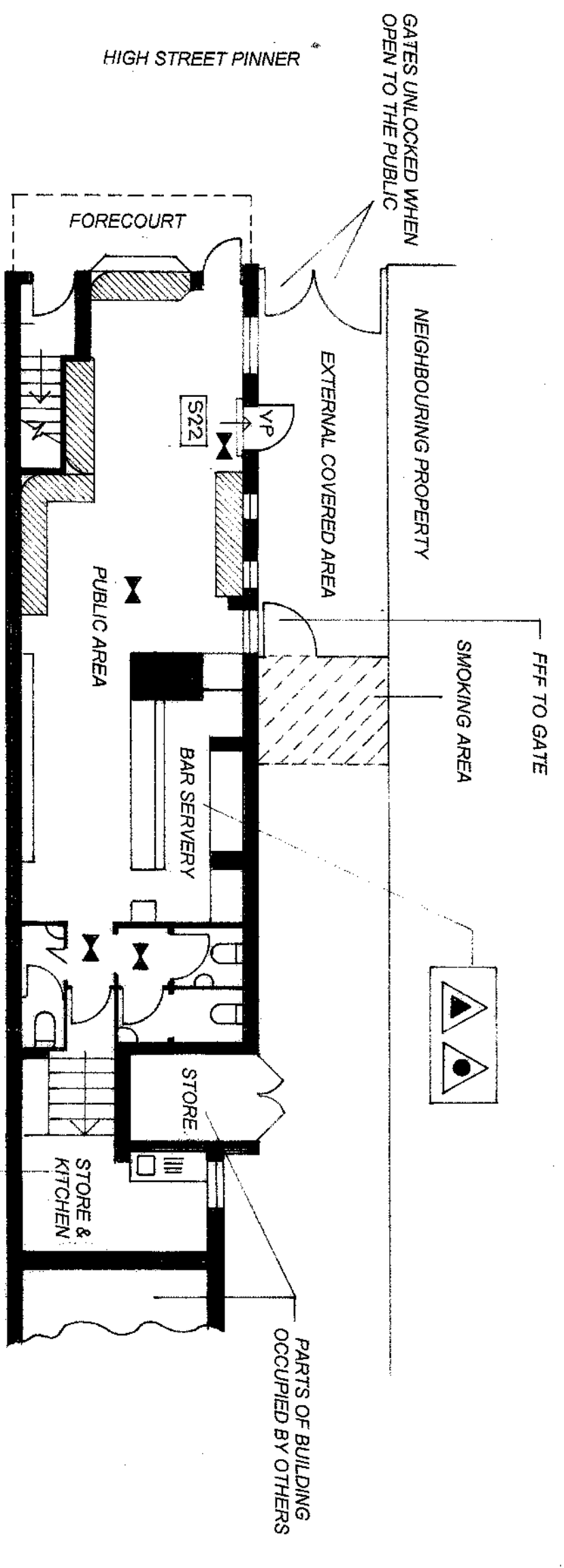
VINTAGE WINE BAR

36a HIGH STREET

PINNER HAS 5PW

LICENSING PLAN

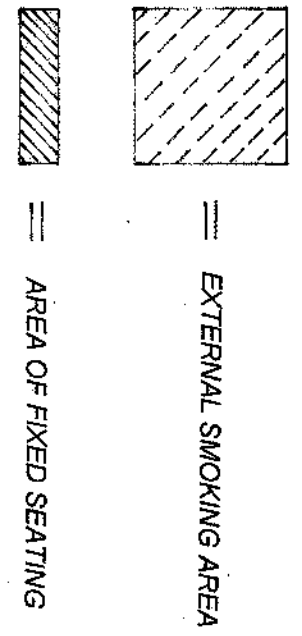
SCALE 1:100



**FIRE SAFETY LEGENDS**  
[AS USED ON ATTACHED PLANS]

	FIRE ALARM CALL POINT		ALARM SOUNDER / SIREN
	DOOR FITTED WITH PUSH BAR RELEASE		EMERGENCY LIGHTING
	DOOR WITH ONLY SIMPLE FASTENING		PERMANENTLY ILLUMINATED EMERGENCY LIGHT
	DOOR FREE FROM LOCKABLE FASTENINGS	<b>NOTES:</b>	
	VISION PANEL		FIRE EXIT OR EMERGENCY EXIT
	WATER EXTINGUISHER		AS ABOVE BUT SUSPENDED ABOVE HEAD HEIGHT
	FOAM EXTINGUISHER		FIRE ESCAPE KEEP CLEAR
	CO2 EXTINGUISHER		NO SMOKING
	DRY POWDER EXTINGUISHER		FIRE DOOR KEEP SHUT
	HYDRAULIC HOSE REEL		FIRE DOOR KEEP LOCKED SHUT
	FIXED EXTINGUISHER INSTALLATION		
	SPRINKLER SYSTEM		
	HEAT DETECTOR		
	SMOKE DETECTOR		
	FIRE BLANKET IN CONTAINER		

**OTHER LEGENDS**



**NOTE**  
THE PREMISES CAPACITY SHOULD NOT EXCEED 60 PERSONS INCLUDING MEMBERS OF STAFF

48 Greenford Gardens  
Greenford Middlesex UB6 9LZ  
Telephone/Fax: 020 8578 0155  
Mobile: 07976 510827